



Casa Capulín located in the heart of San Miguel

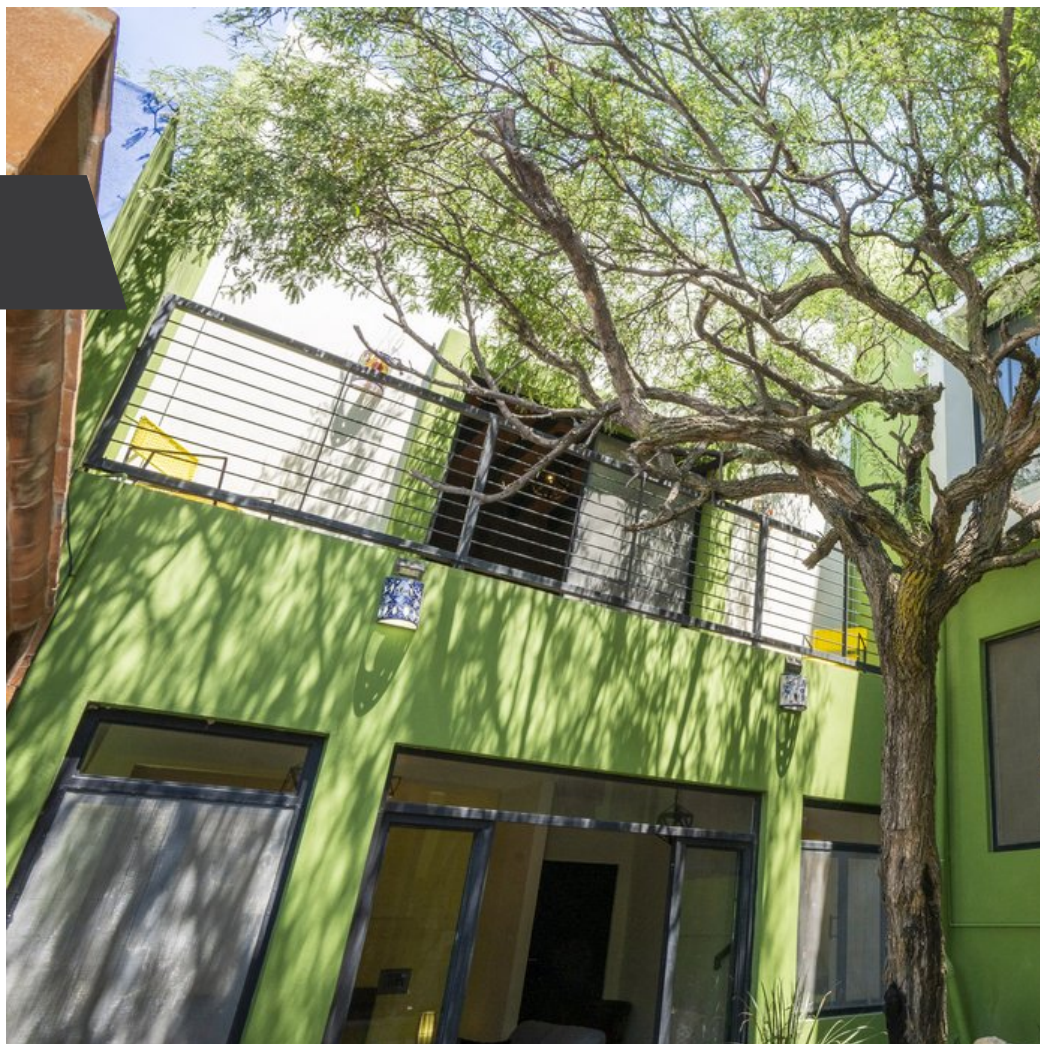
\$0 USD

La Palmita

MAIN FEATURES

- Ref: 6626
- Bedrooms: 2
- Bathrooms: 2
- Half Bathrooms: 2

Casa Capulín is a house that offers two full bedrooms with full ensuite bathrooms. The largest bedroom on the highest level is spacious and features a gorgeous boveda ceiling, a private terrace with beautiful views of San Miguel de Allende, and a kiva-style fireplace with heating for the winter months. The second bedroom has wooden beams on the ceiling, a small terrace overlooking the patio, and built-in closets. The large dining area features a handcrafted wood table and chairs and a well-equipped kitchen, perfect for hosting family and friends. The home surrounds a small patio with a garden area and a uniquely designed stone weeping wall, creating a tranquil



Evelyn Jiménez
55.4388.6917
evelyn@realtysanmiguel.com